

ASUS Turbo Key

ASUS Turbo Key allows the user to turn the PC power button into a physical overclocking button. After the easy setup, Turbo Key can boost performances without interrupting ongoing work or games—with just one touch!

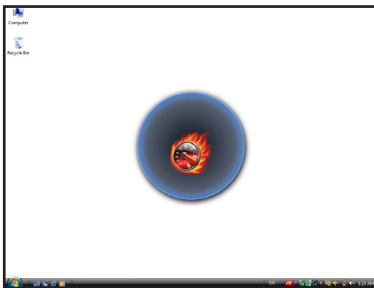
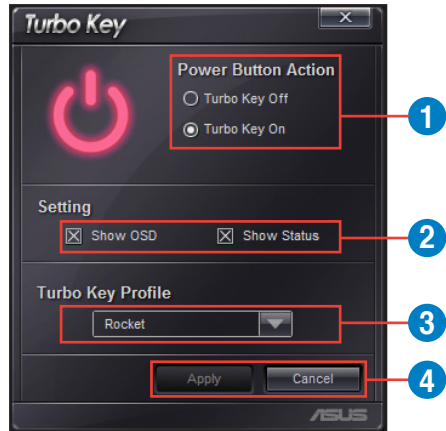
Launching ASUS Turbo Key

1. Install ASUS Turbo Key from the motherboard support DVD.
2. Restart your computer. ASUS Turbo Key automatically starts after Windows® start-up.
3. Double-click the ASUS Turbo Key icon in the Windows® notification area to launch the Turbo Key user interface.

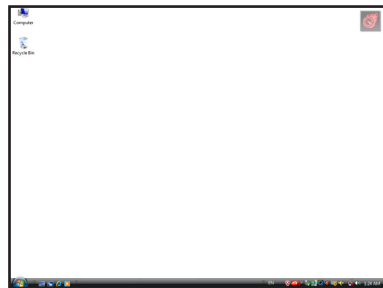


Configuring ASUS Turbo Key

1. Select your desired power button action. Select **Turbo Key Off** to keep the power button as a common switch. Select **Turbo Key On** to boost system performance after pressing the power button.
2. You can choose whether to show Turbo Key OSD and status by clicking the check boxes in the **Setting** section.



Turbo Key OSD



Turbo Key Status

3. You can decide the performance boost level by selecting **Turbo Key Profile**. You can also load personal profiles saved in the **ASUS TurboV** utility. The default is "Rocket Mode". For detailed ASUS TurboV configurations, refer to the software manual in the support DVD or visit the ASUS website at www.asus.com.
4. Click **Apply** for all settings to take effect.

Using ASUS Turbo Key

Press the power button on your computer chassis to use the Turbo Key function defined in the Turbo Key user interface. Press the power button again to turn off the Turbo Key function.



Press and hold the power button for 4 seconds will turn off your computer.

