

Audio configurations

The Realtek® audio CODEC provides 8-channel audio capability to deliver the ultimate audio experience on your computer. The software provides Jack-Sensing function, S/PDIF Out support, and interrupt capability. The CODEC also includes the Realtek® proprietary UAJ® (Universal Audio Jack) technology for all audio ports, eliminating cable connection errors and giving users plug and play convenience.

Follow the installation wizard to install the Realtek® Audio Driver from the support CD/DVD that came with the motherboard package.

If the Realtek audio software is correctly installed, you will find the **Realtek HD Audio Manager** icon on the taskbar. Double-click on the icon to display the Realtek HD Audio Manager.

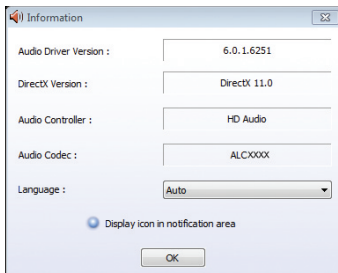


A. Realtek HD Audio Manager for Windows® 7™ / Vista™



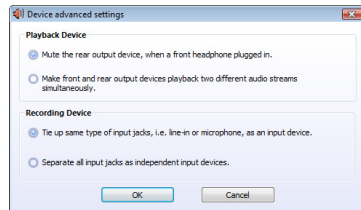
Information

Click the **Information** button (i) to display information about the audio driver version, DirectX version, audio controller, audio codec, and language setting.




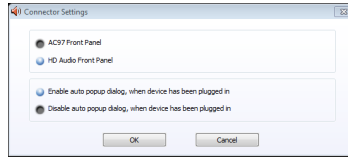
Device advanced settings

Click **Device advanced settings** to show further settings for the playback and recording device.



Connector settings

Click the **Connector Settings** button () to view other settings for the analog/digital output/input ports and HD/AC97 mode switch.



The Jack-detection and Front Panel Jack-Retasking functions can work properly only under HD mode. When you want to use these functions, ensure that you set these functions to HD mode in both this utility (Realtek HD Audio Manager) and the BIOS settings.

Configuration options

Click any of the tabs in this area to configure your audio settings.

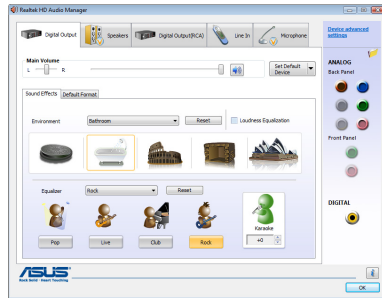


The Configuration options shown in this section are for reference purposes only and may not exactly match what you see on your screen. In the Windows Vista™ environment, Realtek HD Audio Manager automatically detects devices connected to the analog/digital ports and shows corresponding configuration options tabs.

Digital Output

To set the digital output options

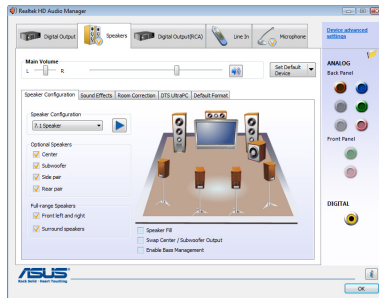
1. Click the **Digital Output** tab.
2. Click **Set Default Device** to set the digital output port as the default audio output device and/or communication device.
3. Click the **Sound Effects** sub-tab for options on changing the acoustic environment and karaoke settings, or click the **Default Format** sub-tab for options on changing the default audio output format.
4. Click **OK** to effect the Digital Output settings and exit.



Speakers

To set the speakers options

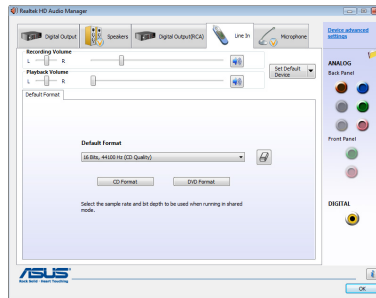
1. Click the **Speakers** tab.
2. Click **Set Default Device** to set the analog ports as the default audio output device and/or communication device.
3. Click the **Speaker Configuration** sub-tab for audio channel options and test.
4. Click the **Sound Effects** sub-tab for options on changing the acoustic environment and karaoke settings.
5. Click the **Room Correction** sub-tab for individual speaker distance adjustment.
6. Click the **DTS UltraPC** sub-tab to turn on/off the DTS UltraPC feature. (**on selected models**)
7. Click the **Default Format** sub-tab for options on changing the default audio output format.
8. Click **OK** to effect the Speakers settings and exit.



Line In

To set the analog line in options

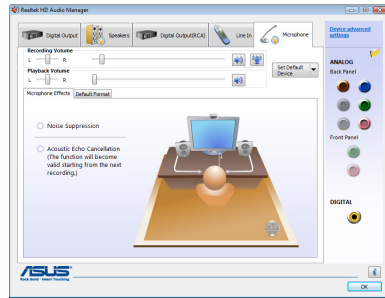
1. Click the **Line In** tab.
2. Click **Set Default Device** to set the analog line in port as the default audio input device and/or communication device.
3. The Line In tab allows you to adjust the recording and playback volume and set a default format for audio input.
4. Click **OK** to effect the Line In settings and exit.



Microphone

To set the Microphone options


1. Click the **Microphone** tab.
2. In the **Microphone Effects** sub-tab, click the **Noise Suppression** option button to reduce the static background noise when recording. Click the **Acoustic Echo Cancellation** option button to reduce the echo from the front speakers when recording.
3. Click the **Default Format** sub-tab for options on changing the default audio input format.
4. Click **OK** to effect the Microphone settings and exit.

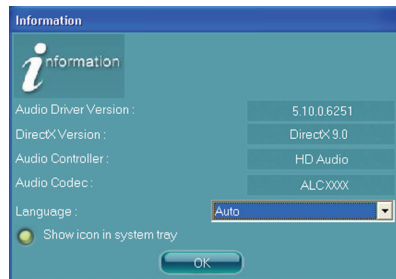


B. Realtek HD Audio Manager for Windows XP



Information

Click the information button () to display information about the audio driver version, DirectX version, audio controller, audio codec, and language setting.



Configuration options

Click any of the tabs in this area to configure your audio settings.

Sound Effect

To set the sound effect options

1. Click the **Sound Effect** tab.
2. Click the shortcut buttons or the drop-down menus for options on changing the acoustic environment, adjust the equalizer, or set the karaoke to your desired settings.
3. Click **OK** to effect the Sound Effect settings and exit.



Mixer

To set the mixer options

1. Click the **Mixer** tab.
2. Turn the volume buttons to adjust the Playback and/or Record volume.



The Mixer option activates voice input from all channels by default. Make sure to set all channels to mute (M) if you do not want voice input.



3. Make adjustments to Wave, SW Synth, Front, Rear, CD volume, Mic volume, Line Volume, and Stereo mix, etc. by clicking the control tabs and dragging them up and down until you get the desired levels.





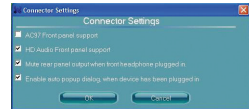
Click the next button (M) to display more menu options.

4. Click **OK** to effect the Mixer settings and exit.

Audio I/O

To set the Audio I/O options


1. Click the **Audio I/O** tab.
2. Click the drop-down menu to select the channel configuration.
3. The control settings window displays the status of connected devices. Click  next to the ANALOG panel to launch the Connector Settings window, which allows HD/AC97 mode switch and settings for the analog output/input ports. Click  next to the DIGITAL panel for digital options.
4. Click **OK** to effect the Audio I/O settings and exit.



The Jack-detection and Front Panel Jack-Retasking functions can work properly only under HD mode. When you want to use these functions, ensure that you set these functions to HD mode in both this utility (Realtek HD Audio Manager) and the BIOS settings.

Microphone

To set the Microphone options

1. Click the **Microphone** tab.
2. Click the **Noise Suppression** option button to reduce the static background noise when recording.
3. Click the **Acoustic Echo Cancellation** option button to reduce the echo from the front speakers when recording.
4. Click the **Beam Forming** option button to eliminate surrounding noise interferences. Click  to start microphone calibration.
5. Click **OK** to effect the Microphone settings and exit.



3D Audio Demo

To start the 3D Audio Demo

1. Click the **3D Audio Demo** tab.
2. Click the option buttons to change the sound, moving path, or environment settings.
3. Click  to test your settings.
4. Click **OK** to effect the 3D Audio Demo settings and exit.

