

KAI'S POWER *Tools*

Fast Facts



...it's serious graphics made fun

Kai's Power Tools (KPT) is a unique and powerful collection of plug-ins that significantly expands the power of Adobe Photoshop, or any image-editing application that fully supports the Photoshop plug-in architecture. More than simply providing shortcuts to digital image enhancement, Kai's Power Tools allows users to create digital special effects not possible through any other methods.

Kai's Power Tools Macintosh 3.0, Windows 3.0, SGI 2.0.1

System Requirements

Macintosh 68040 or better with math coprocessor; 2.5 MB RAM (sharing host application's memory allocation); 8-bit video; MacOS 7.1; applications that 100% support Adobe Plug-ins.

Recommended: Power Macintosh; 16 MB RAM. Spheroid Designer, Texture Explorer Pro and Interform for Power Macintosh only.

IBM PC or compatible 486; 2 MB RAM (sharing host program's memory allocation); 16-bit video; Windows '95 or Windows NT; applications that 100% support the Adobe plug-in specification; CD-ROM drive. Recommended: Pentium processor; 16 MB RAM; 24-bit video

1-800-472-9025

metasales@aol.com

<http://www.metatools.com>



KPT Spheroid Designer

Kai's Power Tools' award-winning plug-in extensions and filters give graphic designers, commercial photographers and computer artists awesome creative imaging tools. Whether you need one-step solutions to complex graphics production jobs or dynamic gradients, infinite textures and awesome fractals for unlimited creativity. It's serious graphics made fun! Plus,

Kai's Power Tools includes Micrografx Picture Publisher LE (Windows) or Color It! LE (Mac) – exciting image editing programs – absolutely free, making KPT a complete standalone solution!



These spectacular text treatments shown here on the cover of Business Week were generated using KPT's Gradient Designer and several one-step filters. The artist continues to use Kai's Power Tools when creating images, text treatments and graphics for Business Week.

Business Week Magazine Cover May 10, 1994
 Artist: Jaime Beaucamp
 Script Design Dennis Ortiz-Hill
 ©1995 McGraw-Hill



The KPT preview windows provide you with real time feedback, a first in the industry. Yank the spiral control and watch as a fractal spins on itself or takes on an entirely new shape. It's the closest thing to painting on a canvas, or sitting at a pottery wheel – only faster and more powerful. You can remove colors and effects as quickly as you applied them –viewing everything instantly.



DSP Business Card Artists: Kino & Paul Hopkins

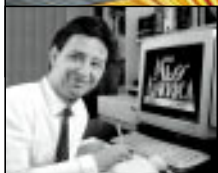
“I use Kai's Power Tools to get a variety of textures and fill-ins. Without it, I'd go crazy trying to finish one image – it would take me a year. Kai's Power Tools makes my job faster and easier.”

Kino, DSP Productions • Hollywood, Calif.

Watch as complex custom gradients, each containing up to 500 selectable colors, appear before your eyes with the Gradient Designer.



And for the first time, transparency is treated as a color! Use as backgrounds or apply to text and scanned images. You've seen them on MTV, the Academy Awards, and the Grammys! Now it's your turn!



"65th Annual Academy Awards Logo" Main Title Design by C. David Pina ©A.M.P.A.S

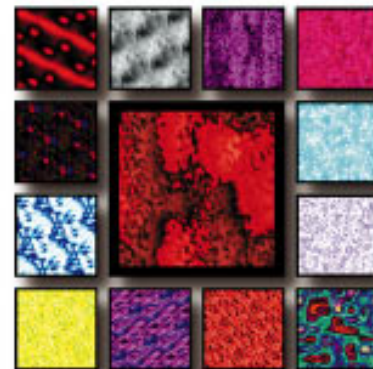
"Kai's Power Tools was perfect for this project. I used the Gradient Designer to create hundreds of graphics featuring letterform surfaces and beveled edges that looked as if they had all been forged from gold. For me, the real advantage is the ability to generate a large number of variations on a single theme. I'll often explore dozens of backgrounds or color combinations before settling on a single direction."

C. David Pina, Pina Design Burbank, Calif.

Realistic marbles, liquids, and metals, as well as surreal molten lava and alien space garbage, are only a mouse click away with the **KPT Texture Explorer**. Climb the branches of the "mutation tree," and see radically different variations of a texture. Or rotate the color ball to see color variations. You can design and save infinite numbers of new and unique textures, or quickly use KPT's presets!

"The easy-to-control features are wonderful! I could live to be 500 years old and never begin to explore all of the possibilities this unique tool has to offer."

Joe Libertini
Graphic Imagination
San Diego, Calif.





KPT Video Feedback

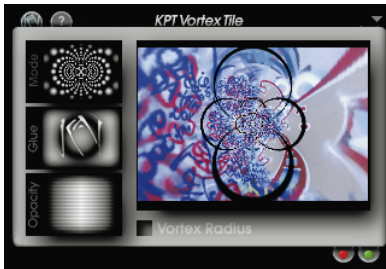


KPT Lens fx

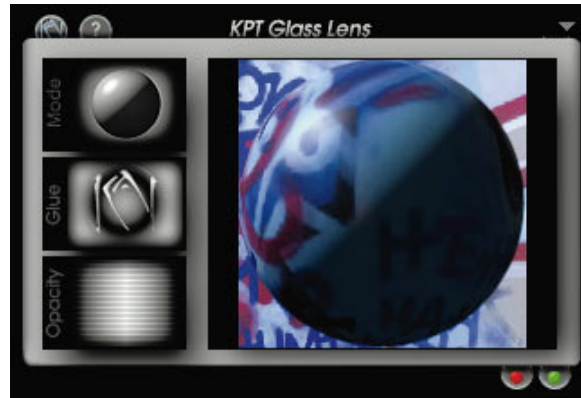


KPT Page Curl

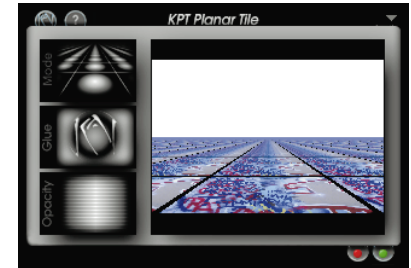
Quick & Easy One-Step Extensions! “Page Curl,” “GlassLens,” and “Vortex Tiling” are just a few of Kai’s incredible extensions! Applied to an entire image, or a selected area, these one-step extensions are excellent, simple solutions to complex production jobs.



KPT Vortex Tiling



KPT Glass Lens



KPT Planar Tiling



"It's impossible to heap too many superlatives on this amazingly creative add-on... Kai's Power Tools is a must-have image editing add-on guaranteed to let your creativity run wild!"

Frederic E. Davis
Windows Sources Magazine
October 1994



"I would not hesitate to recommend this new version to any graphics professional or amateur. In fact, it should be a standard issue."

Jacqui Summers
PC Graphics & Video Magazine
September 1994



"I think the Gradient Designer is great! And I like some of the smaller, often overlooked filters too, such as Noise, Pixel Wind and Pixel Storm. I use the Cyclone filter for generating quick color changes. The KPT Texture Explorer is a useful tool for creating all kinds of things, not just wild textures, but everything from starfields to smoky effects. As for the interface, it's quick and easy to use, probably the fastest available. And I can easily get lost in the Fractal Explorer. In general, I use some part of Kai's Power Tools almost every day."

Lee Varis, Varis Photomedia • Los Angeles, Calif.

1 9 9 4
FINALIST
PC Magazine
Award
for Technical



Excellence
GRAPHICS
SOFTWARE
Kai's Power
Tools 2.0 for
Windows
HSC Software



"KPT includes tools that can function as everyday workhorse items, as well as tools that can produce the occasional special effect. The Sharpen Intensity filter, for example, can punch up the color and saturation of an image, making it ideal for quickly color correcting scanned photos."

Ben Long
MacWEEK Magazine
November 29, 1993



Quotes on Kai's Power Tools 3

Brian Strauss

National Geographic Society

“KPT Spheroid Designer, the killer button effect that every cool World Wide Web site will be busting to use. It really expands your graphic horizons! The visual previews of the effects really help me see where I am going.”

Harry St.Ours, Program Director

Corcoran Online, The Corcoran School of Art

“At first, being a pixel pusher was complicated: so many programs out there, and forget the learning curve! For ten years I've been teaching college-level rasterfarian wannabes the ins and outs of computer graphics, and the firewalls trapping our creativity were price and complexity.

“HSC has blown all that away with their low pricing policies and unbelievably awesome software. And you won't be disappointed by the long awaited Kai's Power Tools 3.0, it will simply will astound you! Now the software solution is simple: Create with KPT Bryce, explore with KPT 3, and polish with KPT Convolver. Any questions?”

Rodney L'Ongnion

4U2C Hollywood, CA

“Broadcast video graphics create a unique challenge for the production artist. On the one hand, the images need to be colorful. On the other, NTSC is a severely limited color space with tight restrictions on contrast and saturation. KPT Spheroid Designer has quickly become my primary video background creation tool. With the incredible real-time feedback, I can mix very subtle blends of colors almost as fast as the producer can ask for new graphics. Individual intensity controls for each component allow me to keep the absolute maximum chroma effect while remaining within NTSC legal levels.”

Kai's Power Tools Features & Benefits

Infinite “3D” Textures Unlike any other texture engine on the graphics market, KPT Texture Explorer lets you zoom and pan infinitely through your textures, as well as enhance them with built-in color convolution control. And the revolutionary design to the interface makes this and the rest of the tools as easy as they are powerful.

The Only Gradient plug-in on the market

While many texture engines, and many kernel-based third-party filters exist for the desktop market, nobody has tried to come up with a solution for complex color blends in image-editing. With the KPT Gradient Designer, complex blends along with a host of other options mean effects that aren't simply shortcuts for traditional methods. Rather, you can create images not possible with any other tools.

Draggable KPT Lens f/x

While the effects with KPT Lens f/x might be simple in their native form (colored noise or smudging), the range of features with Kai's Power Tools, including the draggable “virtual loupe” makes these extensions more versatile than standard kernel-based filters. With settings such as intensity, opacity and apply modes, the KPT Lens f/x functions like a miniature host application.

Real-time Previews

No more waiting. Users know instantly whether or not they want to use a given effect. This reduces production time for professionals and provides the novice with more time to experiment.

Inexpensive

At \$199.00 for the entire set, Kai's Power Tools 3.0 is by far the cheapest, most powerful extension set on the market. Professionals and novices will find it a painless add-on to a typically costly graphic tool box.

Answers to Common Questions

What's New with KPT3? Two major plug-ins have been added to KPT 3: The Spheroid Designer and Interform. The Spheroid Designer works like a 3D materials editor in a 2D environment. Users can create spheres with control over multiple light sources, bump mapping and curvature. Interform allows users to genetically create offspring textures and animate this combination.

What enhancements have been made to existing filters?

The Gradient Designer and Texture Explorer allow users to rotate hues, control saturation and more in real time. The old “one-step” filters have been enhanced with KPT Lens f/x. This virtual loupe allows users to drag over an image for a real-time preview. In addition, it provides controls that allow the user to change the particular effect and its intensity, such as Pixel Weather and Hue Protected Noise.

What does the KPT Spheroid Designer do?

More than just “making balls,” the Spheroid Designer also supports an array of multiple applies and mutations. With the ability to determine highlights, transparencies, bumps, colors and multiple applies, users can create fields of raindrops, planets, strange coral, starbursts, and more.

What happens to the presets from 2.0?

KPT 3 uses new mathematics for the Texture Engine, so old textures are not usable in the new KPT; No enhancements were made to the Fractal Explorer from KPT 2.0. As such, we've included both the KPT Texture Explorer and the KPT Fractal Explorer from 2.1 as “KPT Classics” on the CD-ROM for version 3.

If I have KPT 3, do I still need KPT Convolver?

While both Kai's Power Tools 3 and KPT Convolver offer real-time previews and special-effects editing on images, both of them offer radically different functionality. With KPT Convolver, users are editing the native data in an image. With Kai's Power Tools, they're introducing new components to an image.

Top Ten Reasons to Buy Kai's Power Tools

- 1. Powerful & Useful Tools** Dramatically expand the power of Adobe Photoshop. KPT is found in the toolbox of every digital artist or serious Photoshop user. It enhances any digital imaging project with gradients, textures, spheres and a wide range of special pixel effects, such as hue protected noise or directional smudging.
- 2. KPT Gradient Designer** Elaborate gradient blends among colors are a staple in graphic design. From creating metallic effects, neon glows, elaborate shading and reflections, artists use color-blending almost daily. Now, users can edit the global saturation, brightness, blurring and other gradient parameters in real time.
- 3. KPT Spheroid Designer Design** spheres with virtual 3D control in a two-dimensional environment. Use the Spheroid Designer to create multimedia buttons, or special effects such as starfields and planets, gemstones or shimmering raindrops.
- 4. KPT Texture Explorer Design** infinite textures simply and quickly... textures can be mutated on the fly, as well as zoomed and rotated, color-corrected and more, all in real-time before being applied to your selection. Indispensable for creating backgrounds, text treatments and more.
- 5. KPT Interform** Interform provides the ability to genetically marry two textures and create offspring that come to life as animated backgrounds or standalone movies... the only animated texture engine on the desktop.
- 6. KPT Lens f/x** Subtle but useful effects such as sharpening, fading or blurring can be controlled incrementally, along with opacity and channel operations, and then dragged over your image with a "virtual loupe" for a real-time preview of your customized effect.

7. Affordable Kai's Power Tools set the standard for filter package pricing. Whether you're a novice or a professional, KPT falls within your budget. KPT is a product you will use every day to discover solutions to your special effects needs and production problems.

8. Real-time Previews Every one of the plug-ins with Kai's Power Tools 3 has a real-time preview, with some being four times larger than the previous version. Users can eliminate the trial and error guesswork that goes with image-editing, and explore creative possibilities more intuitively when the results are this quick.

9. Graphic Presets Instead of viewing presets with a pop-up text menu, users can now scroll through a library of thumbnails showing gradients, textures and spheres graphically for quick and easy reference.

10. Bonus CD-ROM Kai's Power Tools 3.0 includes a CD-ROM packed with sample artwork done with Kai's Power Tools, along with tips and tricks for using the new features of KPT3. Even more, you get hundreds of preset bump maps to use with the Spheroid Designer.